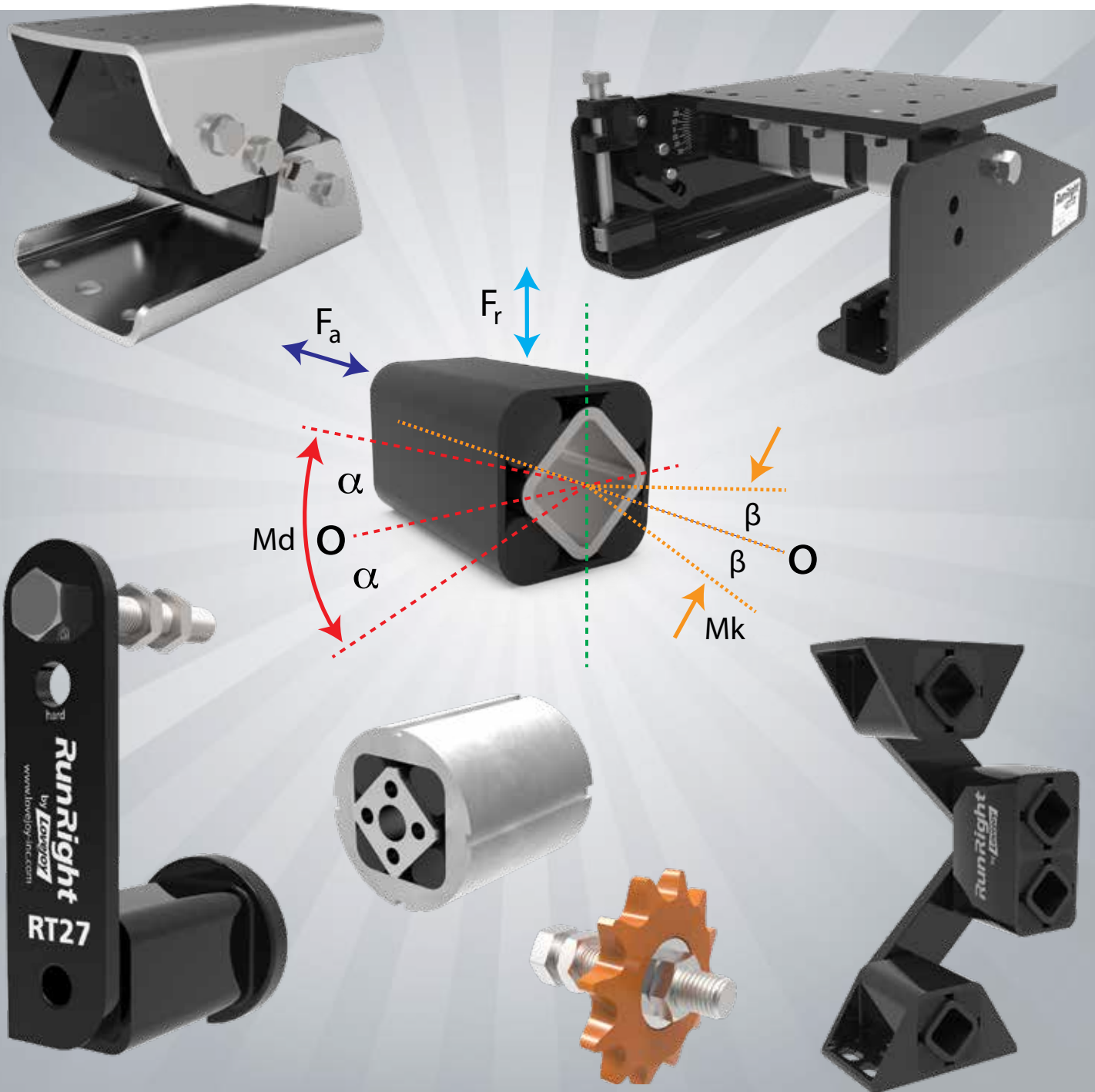


RunRight[®]

by **Lovejoy**

- Tensioners
- Sprocket / Idler Accessories
- Motor Bases
- Oscillating Mounts
- Rubber Suspension Units
- Anti-Vibration Mounts



The leader in elastomeric tensioning devices.

RunRight[®]

by **Lovejoy**

TENSIONER DEVICES



WARNING

Failure to observe the following warnings could cause the power transmission product to break and parts to be thrown with sufficient force to cause serious injury or death.

Selection. Do not exceed catalog ratings. Refer to the Lovejoy catalog for proper selection, sizing, horsepower, torque range, and speed range of these products.

Installation. Proper maintenance, handling, and shop practices are critical. Follow all installation instructions included with the product and provided by your equipment manufacturer, and all applicable federal, state, and local regulations concerning the safe operation and maintenance of manufacturing equipment. Do not weld the products in this catalog as excess heat will effect or destroy the rubber or polymer materials.

Operation. Avoid sudden shock loads during start up and operation.

Do not operate a coupling assembly with improper alignment or bolt torque or with damaged or worn elastomeric elements. Inspect the assembly for these conditions shortly after initial operation and periodically thereafter.

The coupling assembly should operate quietly and smoothly. If the coupling assembly vibrates or makes a beating sound, shut down the equipment immediately and recheck the alignment.

Disclaimer

This catalog is provided solely to give you analysis tools and data to assist you in your product selection. Product performance is affected by many factors beyond the control of Lovejoy. Therefore, you must validate the suitability and feasibility of all product selections for your applications.

Lovejoy does not manufacture or sell power transmission products for elevators, man lifts, or other devices that carry people. We make no representation or warranty concerning such uses disclaim all liability for harm that might result from the use of our products in those applications.

Lovejoy products are sold subject to Lovejoy terms and conditions of sale (view at www.lovejoy-inc.com/resources), which include our limited warranty and remedy. Please consult with your Lovejoy engineer for more information and assistance.

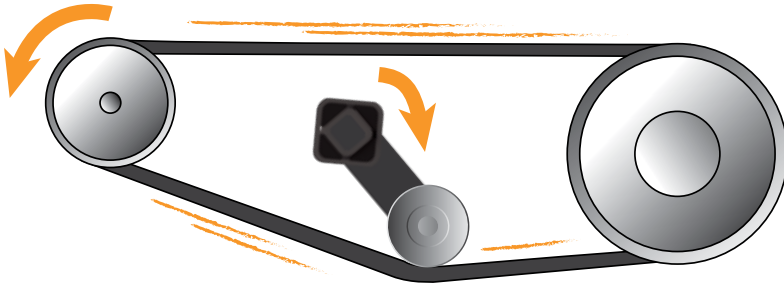
Every reasonable effort has been made to ensure the accuracy of the information in this writing, but no liability is accepted for errors, omissions or for any other reason.

If you have any questions, contact the Lovejoy Engineering Department at 1-630-852-0500 or email apleng@lovejoy-inc.com.

Tensioner Devices Usage Illustrations

RunRight[®]
by **Lovejoy**

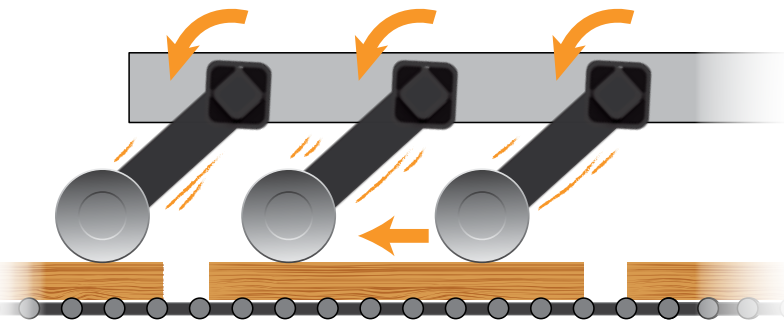
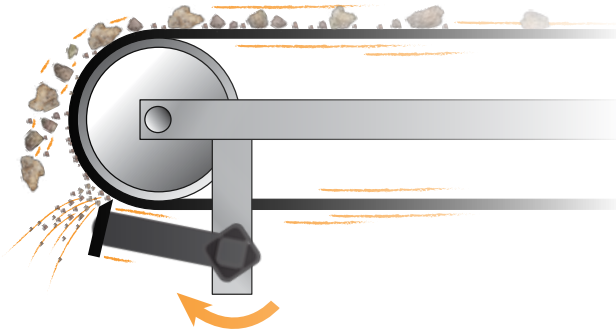
TENSIONER DEVICES



Low maintenance solution that provides a constant torque resulting in a high belt service life.



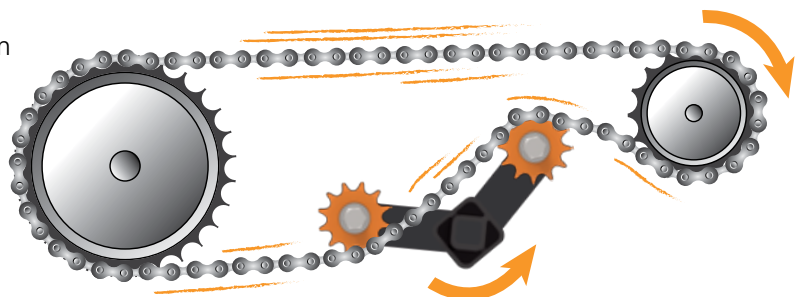
Effectively dampens belt vibrations by applying constant pressure that will continually clean conveyor belts and compensate for scraper wear.



Accurately transports product by applying constant pressure. Offers a maintenance-free and cost-effective solution while providing a long service life.



Double-arm design provides quiet dual slack compensation and diminishes deterioration on rollers and bearing while dissipating system vibrations.



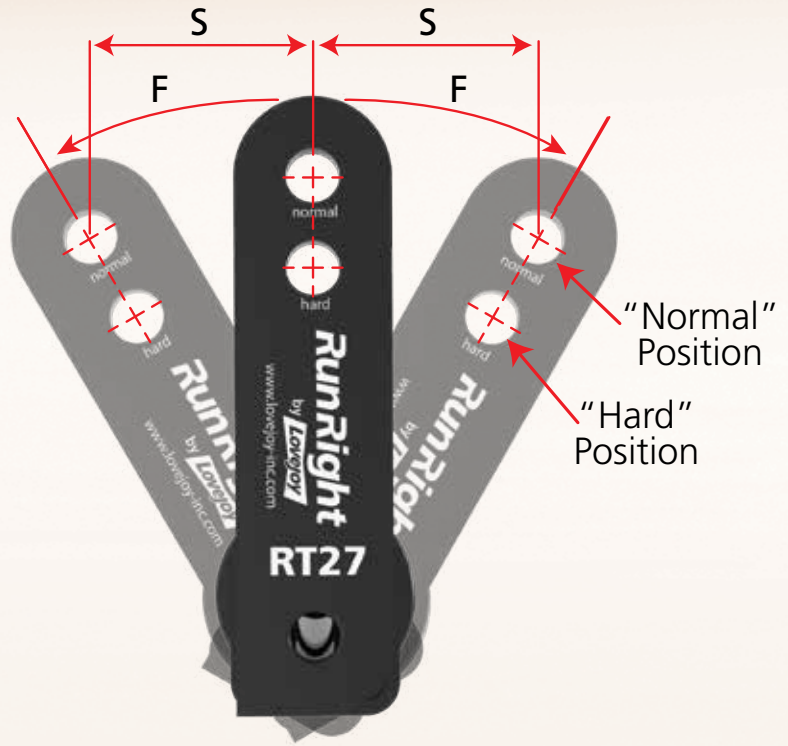
RunRight® Tensioner Devices

Tensioner Technology

Install RunRight tensioners on a rigid, flat and clean machine surface using the mounting bolt provided. The frictional contact between the tensioner housing and the machine surface is usually sufficient for proper installation. If the surface of the machine is uneven or highly corroded, a locking pin can be used at the positioning notch for a secure connection to a machine's irregular surface.

Tensioning Force

The tensioning force of the RunRight tensioner can be continuously adjusted. The maximum installation tensioning torque is 30° from the neutral position. The tensioning forces for the RT, RT N, RT R, RT F and RT SS using the normal hole on the tensioner arm for the idler sprocket, chain and roller accessories are in the chart below. When using the hard hole on the tensioner arm, the tensioning force will increase by approximately 25% from what is shown in this chart.



TENSIONER DEVICES

Tensioner Size	Tensioning Force @ "Normal" Position											
	10° Pre-Tensioning Angle				20° Pre-Tensioning Angle				30° Pre-Tensioning Angle			
	F (n)	F (lbs)	S (mm)	S (in)	F (n)	F (lbs)	S (mm)	S (in)	F (n)	F (lbs)	S (mm)	S (in)
11	15	3.4	14	0.6	40	9.0	28	1.1	80	18.0	40	1.6
15	25	5.6	17	0.7	65	14.6	34	1.3	135	30.3	50	2.0
18	75	16.9	17	0.7	180	40.5	34	1.3	350	78.7	50	2.0
27	150	33.7	22	0.9	380	85.4	44	1.7	800	179.8	65	2.6
38	290	65.2	30	1.2	730	164.1	60	2.4	1500	337.2	87	3.4
45	500	112.4	39	1.5	1300	292.3	78	3.1	2600	584.5	112	4.4
50	750	168.6	43	1.7	2150	483.3	86	3.4	4200	944.2	125	4.9

Notes: ■ RT SS40 same tensioner force as RT 38. ■ RT H tensioners approximately 40% lower tensioning forces as the standard RT Tensioners.
 ■ Mounting accessories into the "Hard" Position results in approximately 25% Higher Tensioning force over "Normal" Position.

Mounting Bolt Tightening Torque		
Size	Grade 8.8	Grade 12.9 shipped with RT F
M6	10 Nm	17 Nm
M8	25 Nm	41 Nm
M10	49 Nm	83 Nm
M12	86 Nm	145 Nm
M16	210 Nm	355 Nm
M20	410 Nm	690 Nm
M24	750 Nm	—

Rubber Characteristics				
Rubber Compounds	Torque & Load Factor*	Operating Temperature F° (C°)	Rubber Type	Rubber Characteristics
Tensys™ 10	1.0	-40° to 180° (-40° to 80°)	Natural	Standard
Tensys™ 20	approximately 1.0	-22° to 195° (-30° to 90°)	Neoprene	Oil Resistant
Tensys™ 30	approximately 1.0	-40° to 180° (-40° to 80°)	Natural	High-Dampening (Motor Bases only)
Tensys™ 40	approximately 0.6	180° to 250° (80° to 120°)	EPDM	High Temperature Resistant

Note: ■ *Factor in relation to torque & loads shown on standard selection charts.

Tensioner Devices

RT, RT N, RT H, RT R (Imperial)



RunRight Tensioners Type RT, RT N, RT H, RT R

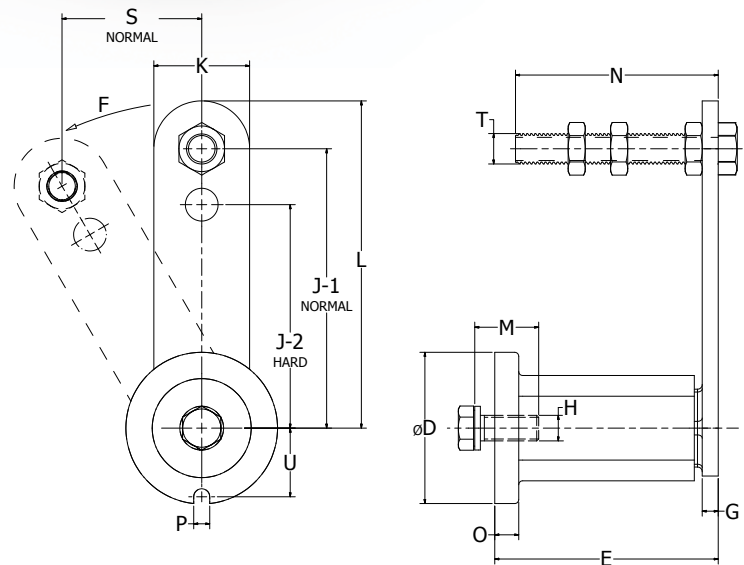
RunRight RT tensioners offer a full range of belt and chain tensioners. They are manufactured with the standard Tensys™ 10 rubber inserts and can be used for applications operating within a -40° to 180°F (-40° to 80°C) temperature range.

RunRight RT N tensioners are manufactured with galvanized powder metal parts and are designed for outdoor or oily applications. The Tensys 20 neoprene inserts are oil resistant and can be used for applications operating within a -22° to 195°F (-30° to 90°C) temperature range.

RunRight RT H tensioners enable a reduction of tensioning force of up to 40% when compared to the RT and RT-N tensioners. The Tensys 40 heat resistant rubber inserts are ideal for applications operating within a 180° to 250°F (80° to 120°C) temperature range.

RunRight RT R tensioners are for use on internal combustion engines and compressors. They are manufactured with powder metal or cast iron housings, fully welded steel arms and inner square, come with the standard Tensys 10 rubber inserts and can be used for applications operating within a -40° to 180°F (-40° to 80°C) temperature range.

The RT 11 to RT 27 housings are manufactured from powder metal. The RT 38 and RT 45 housings are manufactured from cast iron, the RT 50 housing is manufactured from steel. All arms and inner squares are steel castings or weldments. All of the tensioners include a zinc plated mounting screw and locking washer.



TENSIONER DEVICES

Tensioners Type RT, RT N, RT H, RT R (includes Imperial Idler Hardware)															
UPC #	Type	Dimensions - Inches													
		D	E	G	H	J-1	J-2	K	L	M	N	O	P	T	U
68514417451	RT 11	1.38	2.01	0.20	M6	3.15	2.36	0.79	3.54	20mm	2.00	0.24	0.31	3/8-16	0.65
68514426709	RT N11														
68514417452	RT 15	1.77	2.52	0.20	M8	3.94	3.15	0.98	4.43	25mm	2.00	0.31	0.33	1/2-13	0.82
68514425597	RT N15														
68514457517	RT H15														
68514483883	RT R15														
68514417453	RT 18	2.28	3.11	0.24	M10	3.94	3.15	1.18	4.53	30mm	2.50	0.41	0.33	1/2-13	1.00
68514417490	RT N18														
68514453285	RT H18														
68514483881	RT R18														
68514417454	RT 27	3.07	4.25	0.31	M12	5.12	3.94	1.97	6.10	40mm	3.50	0.59	0.41	1/2-13	1.35
68514417491	RT N27														
68514453287	RT H27														
68514481601	RT R27														
68514417455	RT 38	3.74	5.51	0.39	M16	6.89	5.51	2.36	8.07	40mm	5.00	0.59	0.49	3/4-10	1.65
68514417492	RT N38														
68514453289	RT H38														
68514417456	RT 45	4.53	7.87	0.47	M20	8.86	7.09	2.76	10.24	50mm	6.00	0.71	0.49	3/4-10	2.05
68514417493	RT N45														
68514453291	RT H45														
68514453341	RT 50	5.12	8.27	0.79	M24	9.84	7.87	3.15	11.42	60mm	6.00	0.79	0.67	3/4-10	2.26
68514463652	RT N50														
68514457519	RT H50														

Note: ■ See pages 11 and 12 for additional product and performance data. See Page 12 for "F" and "S" Dimensions.